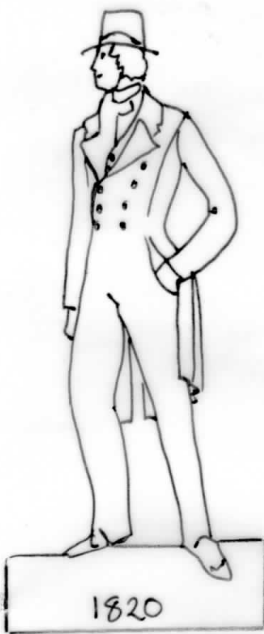


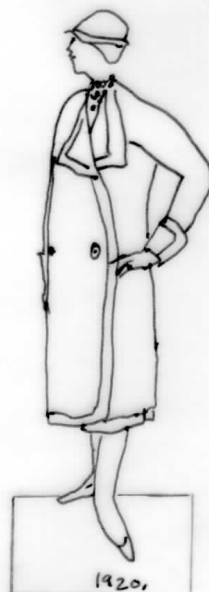
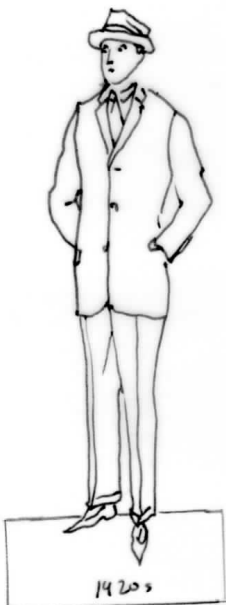
Historic Costume and Transport Outlines

These outlines can be used in a number of different ways. They can be cut out, coloured in and stuck on appropriate sections of the Timeline, the Postcards and the Models of Peckham buildings (see Key Stage 1 scheme of work). The outlines can be blown up to A3 and stuck onto card then cut out including the tab which can then be bent at 90° to make stand up figures. Children will learn that people wore different costumes at different times and that transport also changed and they can be matched with the date of the building. There are also outlines of people wearing a variety of traditional costumes reflecting the multiethnic population in Peckham.

● **Our Hut** Peckham THI Resources

www.ourhut.co.uk



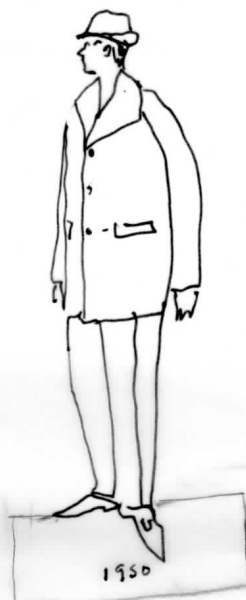




1950



1950



1950



1963



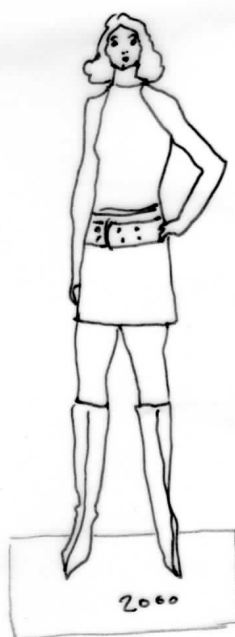
2000



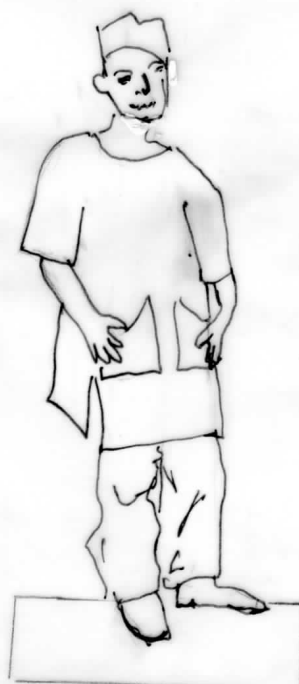
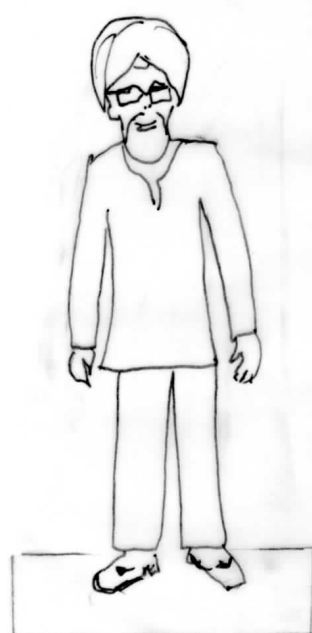
2000

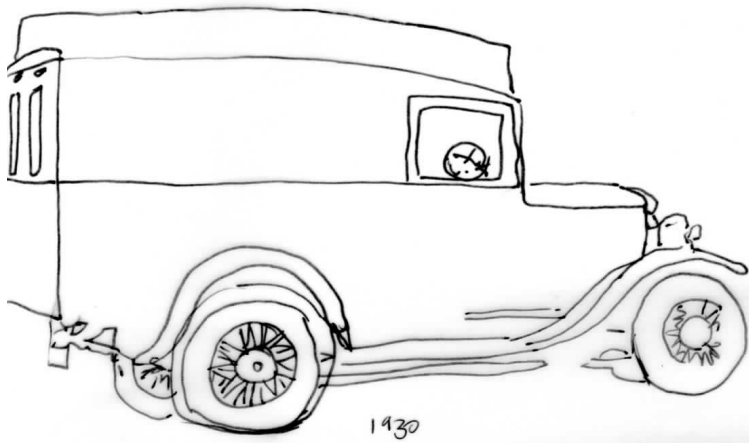


2000



2000





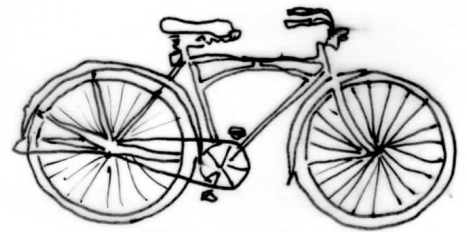
1930



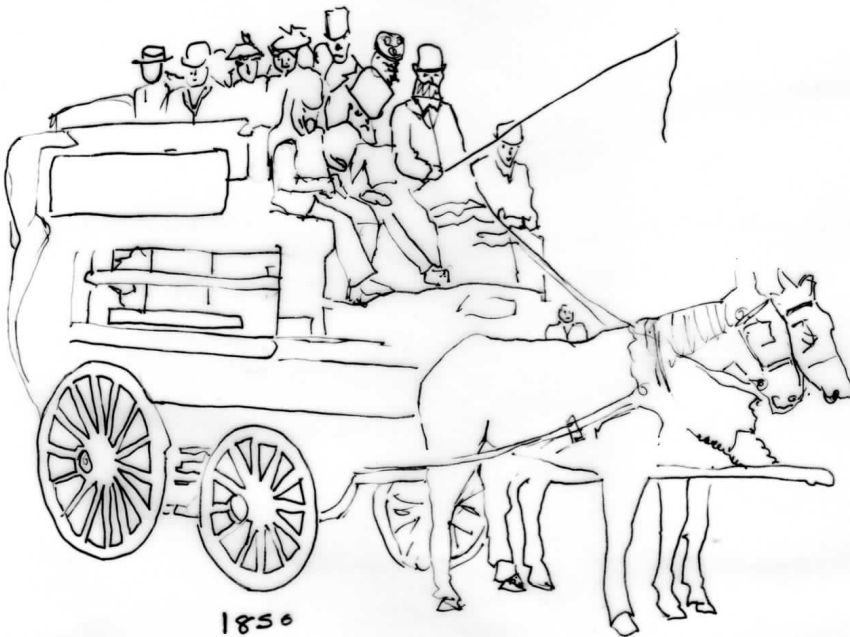
Roman soldier



1920



20th Century
1900s →



1850



1880

